

4409 East West Highway

Crescent Cities Nursing Home

Four Stories / Sprinklered / Standpipe

CO. 7
DETAIL MAP

D9

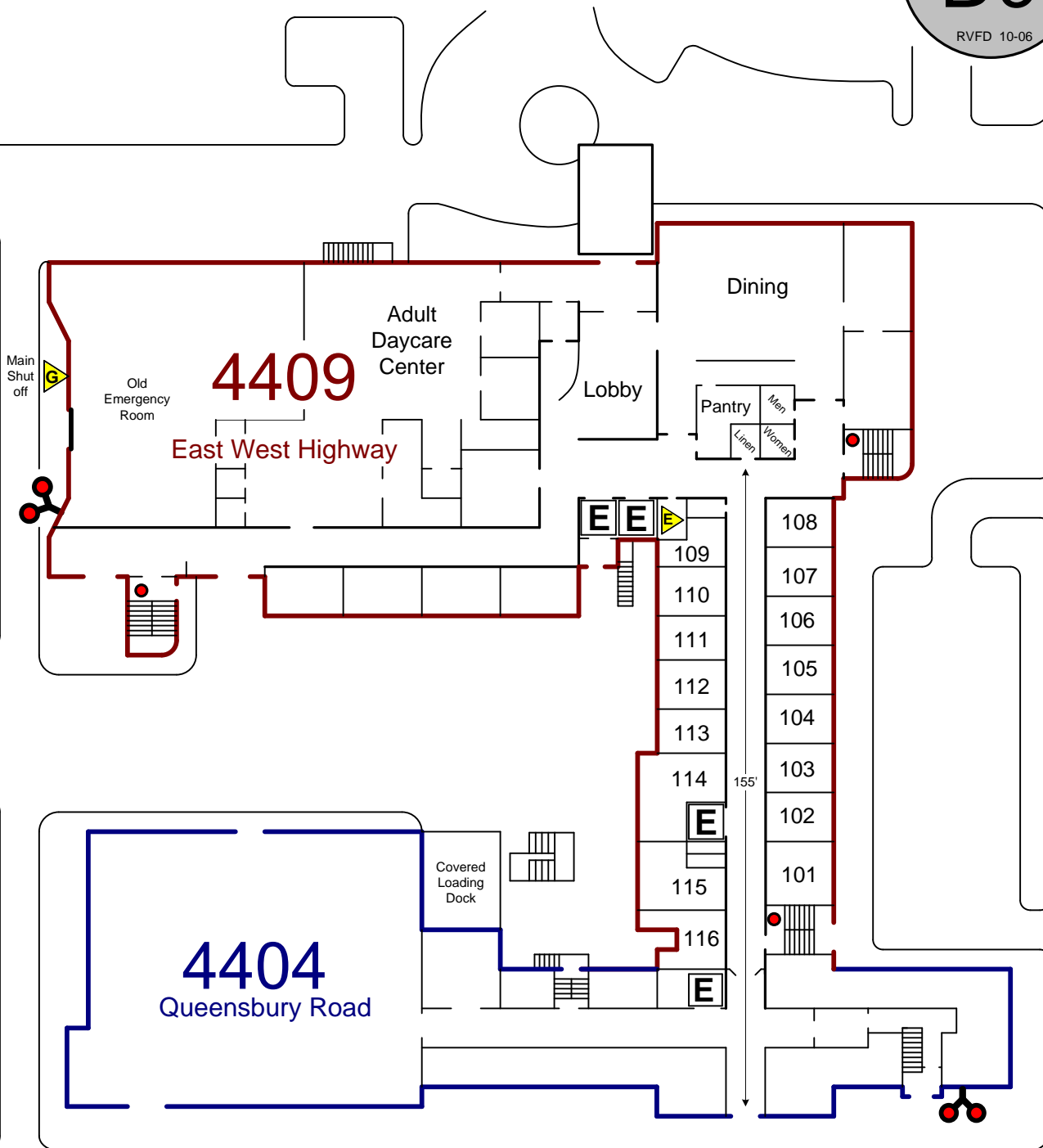
RVFD 10-06

6204 6206

To East West Highway

44th Avenue


44th Place



From Co. 1

Queensbury Road

To Baltimore Ave

 4409 Main Electric Shutoffs
in Basement Electrical
Room near Boiler room.

Mr. Wynter 301-699-2000